



Summary

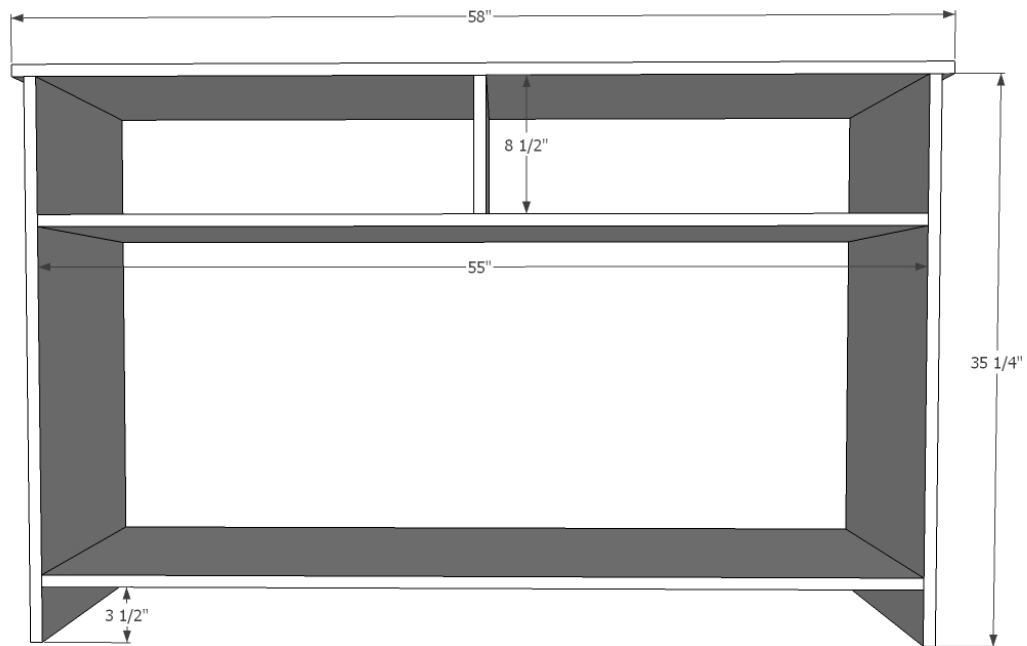
We needed an entryway console for our home that was both functional and beautiful. I love open shelving with baskets for quickly storing things like mail, keys and sunglasses, but also wanted storage behind doors for larger, less attractive things. Using plywood for the carcass and pine boards for the face frame, doors and base, we built this entryway console for about \$100.

Description

Counterheight console table with open and closed storage, perfect for the entryway or media room.



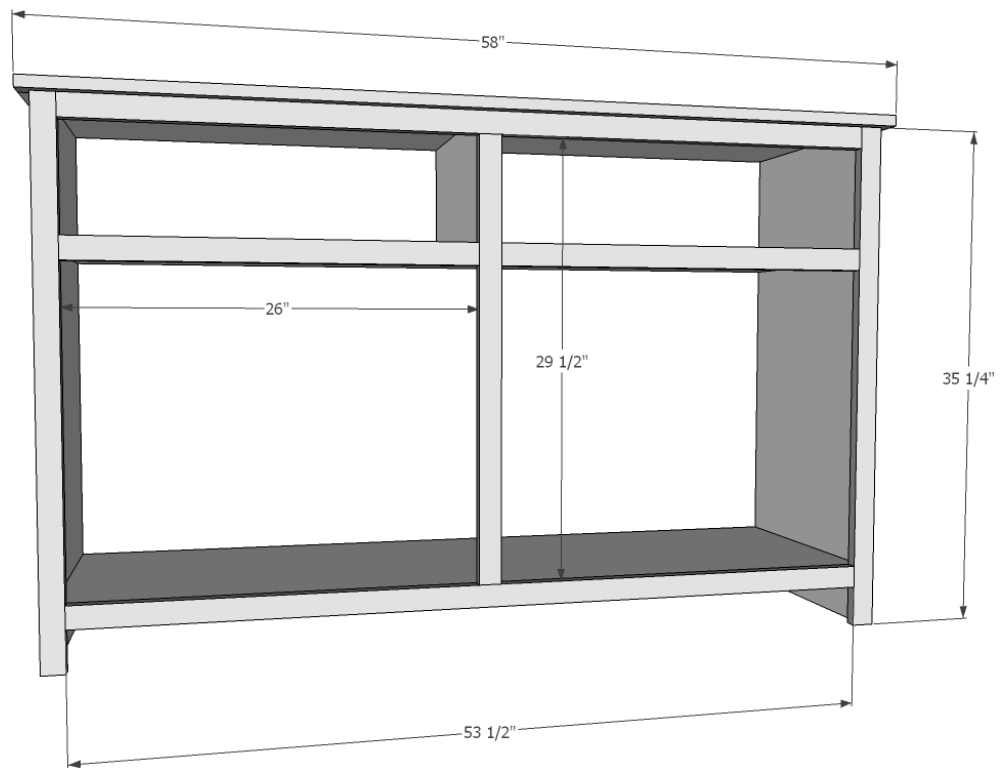
Shopping List	Cut List
1 – 4'x8'x $\frac{3}{4}$ " cabinet grade plywood sheet ripped into 15-3/4" wide strips 4 – 1x2 @ 8 feet long 1 – 1x4 @ 8 feet long 3 – 1x3 @ 8 feet long 1- 4'x 8' x $\frac{1}{4}$ " plywood 4 sets of hinges 4 knobs/pulls 4 magnetic clasps 1-1/4" and $\frac{3}{4}$ " brad nails 1- $\frac{1}{4}$ " pocket hole screws Table Saw or Circular Saw Miter Saw Drill Pocket Hole Jig Brad Nailer Random Orbital Sander Tape Measure, Square, Safety Equip	1 – $\frac{3}{4}$ " plywood @ 15-3/4" x 58" – top 2 – $\frac{3}{4}$ " plywood @ 15-3/4" x 55" – shelves 2 – $\frac{3}{4}$ " plywood @ 15-3/4" x 35-1/4" – sides 1 – $\frac{3}{4}$ " plywood @ 15-3/4" x 8-1/2" – divider 1 – 1x2 @ 58" – face frame top 2 – 1x2 @ 35-1/4" – face frame sides 2 – 1x2 @ 53-1/2" – face frame stiles 1 – 1x2 @ 29-1/2" – face frame center 2 – 1x2 @ 26" – face frame shelves 1 – 1x4 @ 16-1/2" – base sides 1 – 1x4 @ 58" – base front cut to fit 8 – 1x3 @ 20-3/4" – door stiles 8 – 1x3 @ 7-7/8" – door rails 4 - $\frac{1}{4}$ " plywood cut to fit approx. 8" x 15-3/4"



Step 1: Carcass

Rip plywood on tablesaw or with circular saw into strips 15-3/4" wide by 8 feet long. From these strips, cut out pieces for carcass. Assemble the carcass using three 3/4" pocket holes and 1-1/4" pocket hole screws per joint, for all joints except center divider.

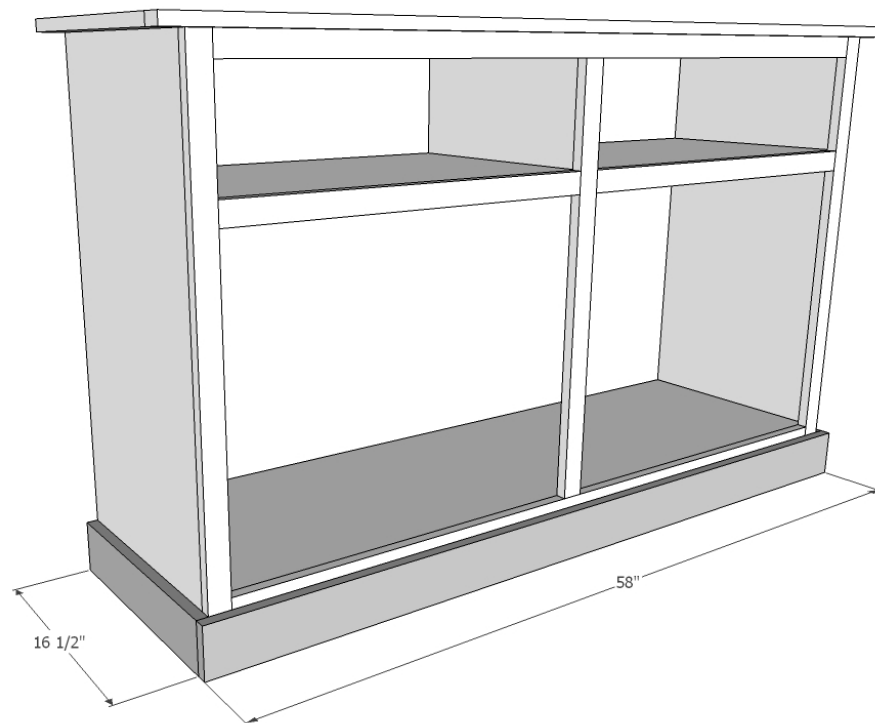
For center divider, apply glue to both ends and position in center of upper shelf opening. Use 1-1/4" brad nails to secure in place.



Step 2: Face Frame

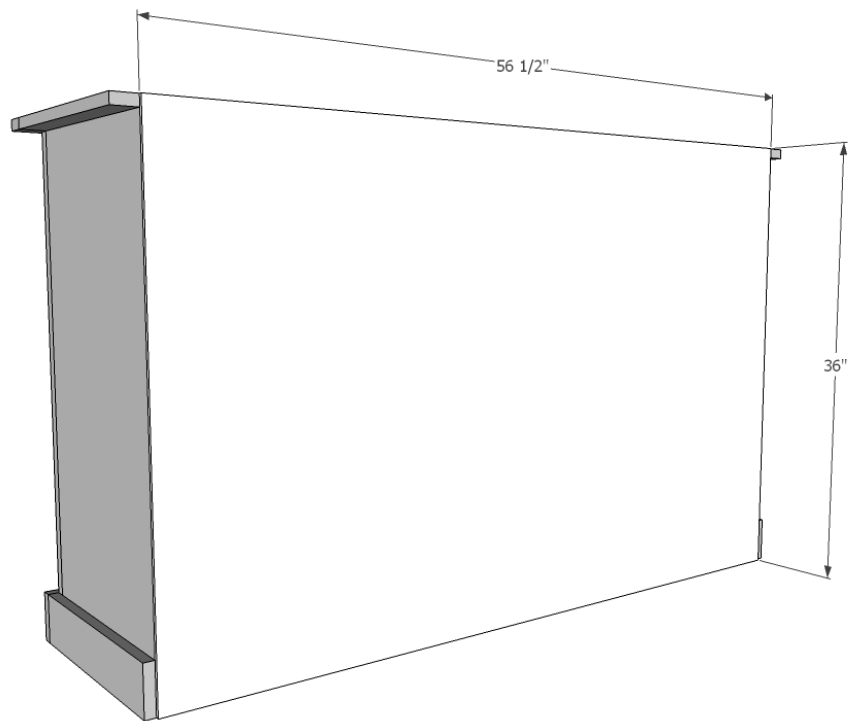
Using 3/4" pocket holes and 1-1/4" pocket hole screws, build face frame on flat level surface. Top face frame piece overhangs front and sides by 3/4".

Nail completed face frame to front of carcass with 1-1/4" brad nails and wood glue.



Step 3: Base

Measure and cut side base pieces. Nail to sides with 1-1/4" brad nails. Measure and cut front base piece. Nail to front with 1-1/4" brad nails.



Step 4: Back

Cut back piece from 1/4" plywood and nail to all edges on back of cabinet using glue and 3/4" brad nails.



Step 5: Doors

Assemble door frame pieces using $\frac{3}{4}$ " pocket holes and 1-1/4" pocket hole screws. Cut plywood slightly larger than opening and nail to back with $\frac{3}{4}$ " brad nails and wood glue.

Install doors with hinges. Add knobs or pulls and magnetic clasps.