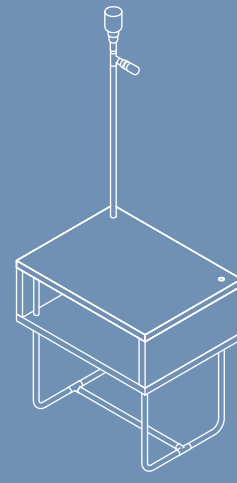


DIY NIGHTSTAND 1.0

By Jamie Guan of HomeMade-Modern.com

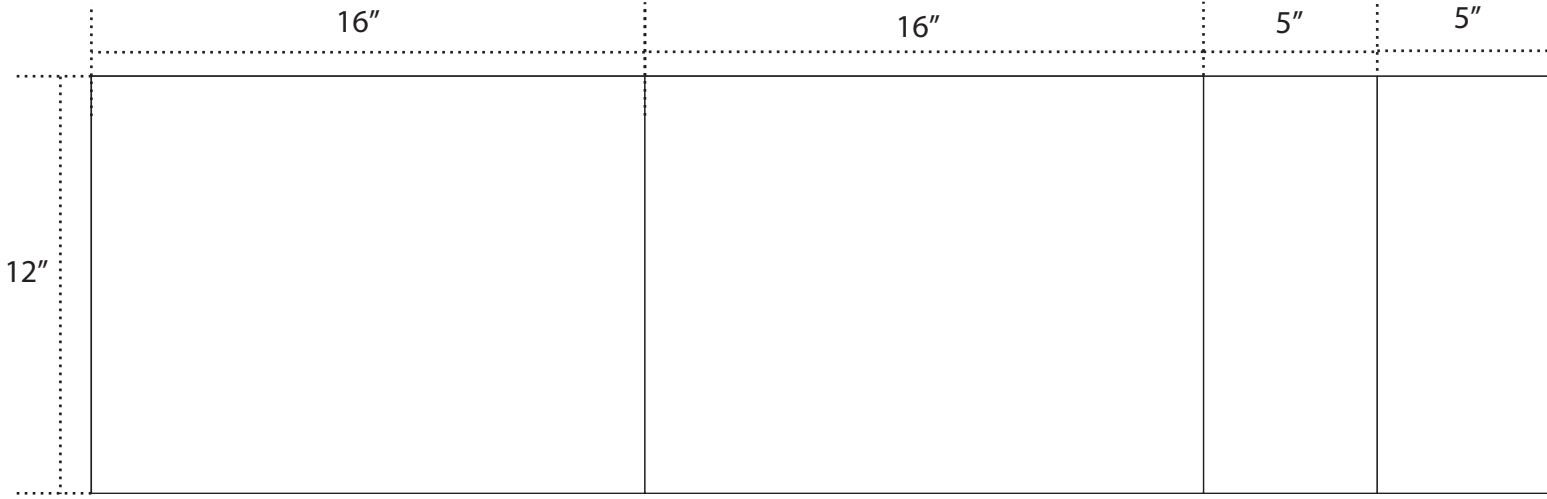
A modern DIY Nightstand made from 3/4" plywood and 1/2" copper pipe.
Go to the HomeMade Modern YouTube channel to watch Jamie make this nightstand!



STEP 1. CUT PLYWOOD

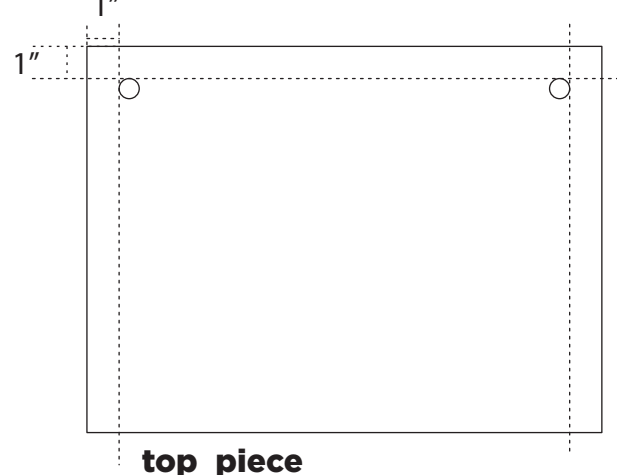
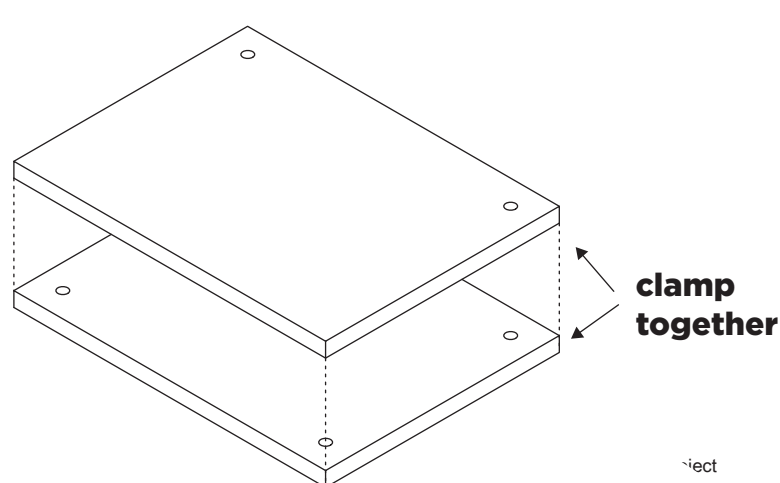
I used my circular saw and compound miter saw to cross cut the plywood.

Note: This nightstand is made from a 12"x48" strip piece of plywood! This can potentially be scrap laying around in your shop!

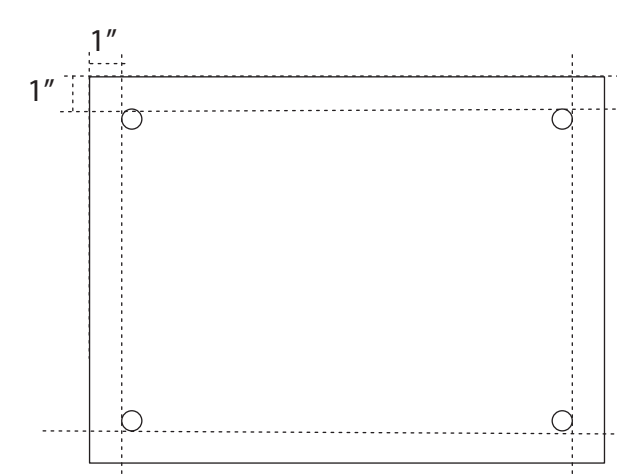


STEP 2. CLAMP & DRILL

I lightly sanded the pieces and prepared them for drilling holes by using my speed square to measure out an inch away from the edge of the plywood. I then took both sheets of plywood and clamped them together. Using my 5/8" hole saw, I drilled two holes all the way through both pieces. I unclamped the pieces and drilled two more holes to finish off the bottom piece. I also pre-drilled my holes for my screws to prevent splitting.



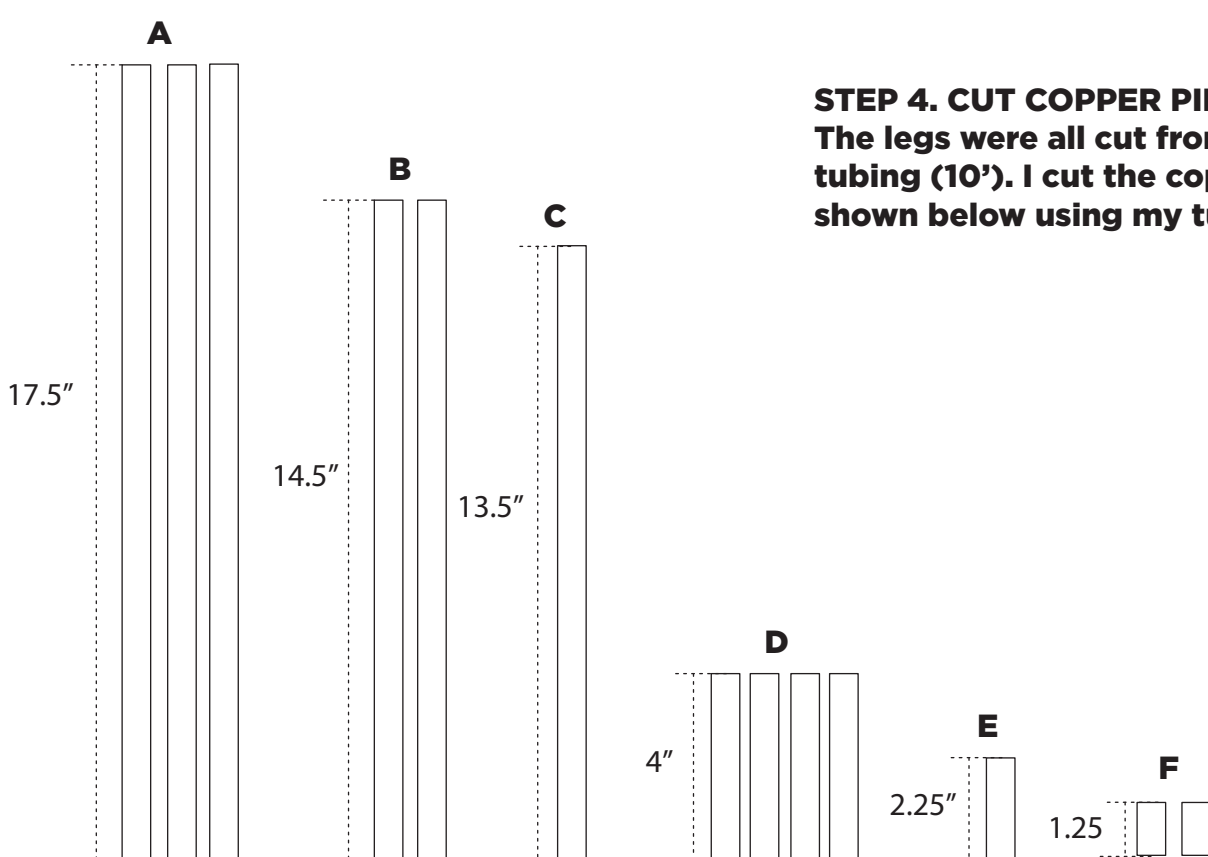
top piece



bottom piece

STEP 3. SAND & SEAL

I made a sanding tool by wrapping sandpaper over a pen to sand the holes so that the copper pipes would fit better.

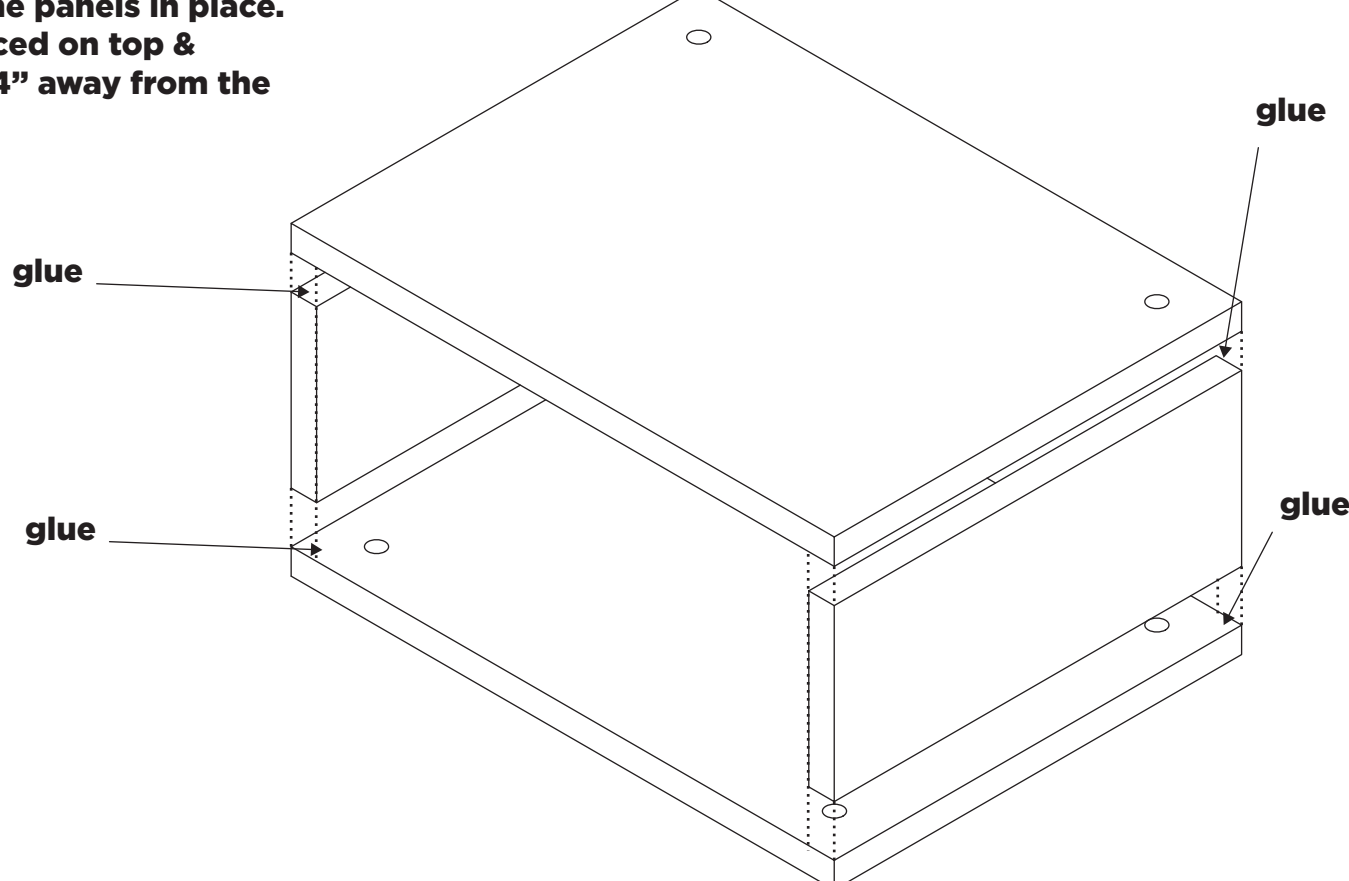


STEP 4. CUT COPPER PIPES

The legs were all cut from one 1/2" copper tubing (10'). I cut the copper to the length shown below using my tubing cutter.

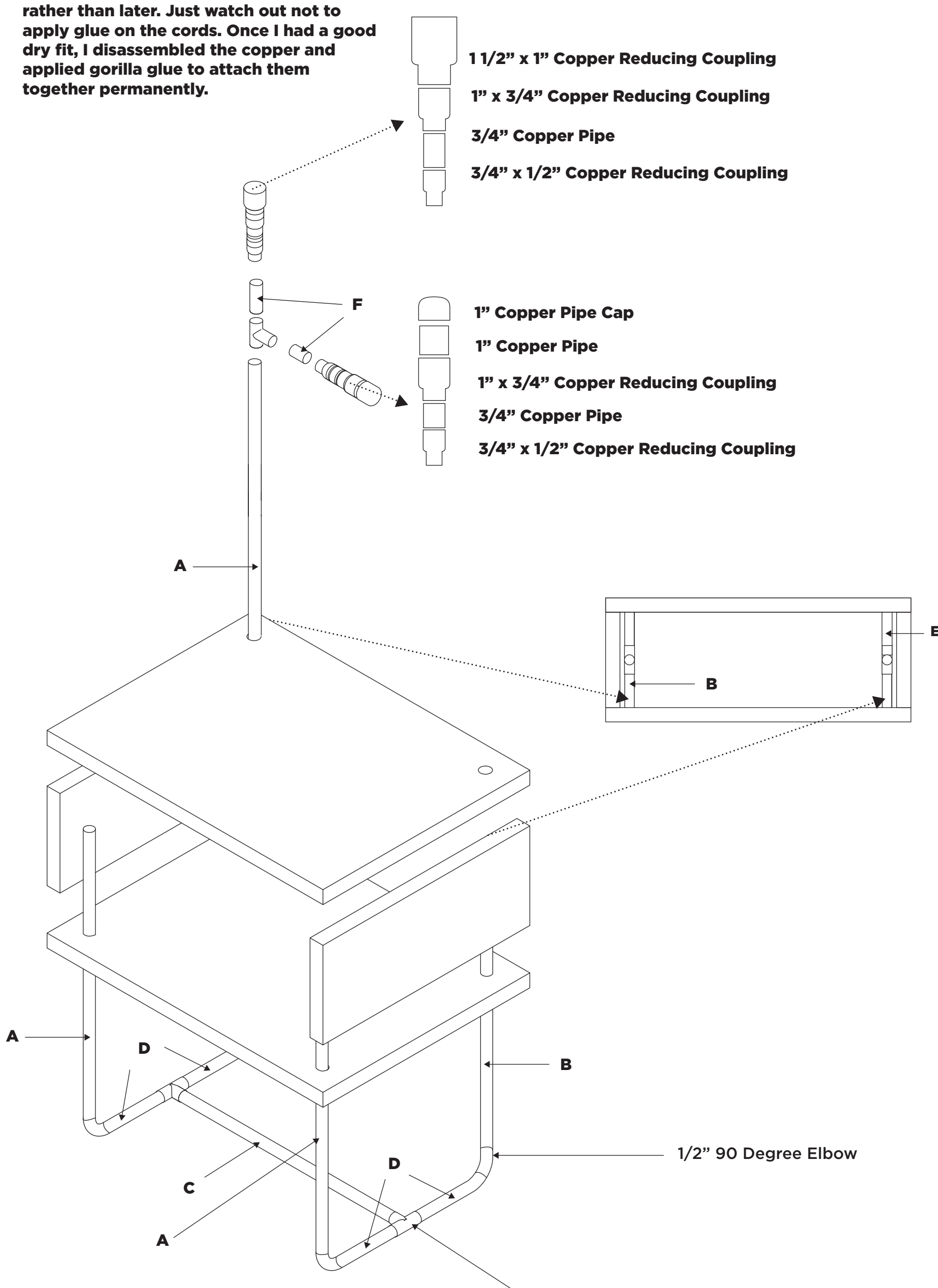
STEP 5. GLUE & SCREW PLYWOOD

To attach the side panels, I pushed them flush against the top and bottom edge and then glue and the panels in place. Three screws evenly spaced on top & bottom edge, roughly 1/4" away from the edge.



STEP 6. ASSEMBLE & GLUE

I began the assembly process by first inserting the vertical copper tubes through both sheets of plywood. I connected the T-connectors where there needed to be and then finished by connecting the corner connectors to the bottom legs. It is easier to thread the wires through the tubes now rather than later. Just watch out not to apply glue on the cords. Once I had a good dry fit, I disassembled the copper and applied gorilla glue to attach them together permanently.



STEP 7. WIRE & FINISH COPPER

To wire the light, I twisted the proper wires together and inserted a heat shrink wire wrap over them to seal it with a heat gun. I finished the copper tubes by rubbing steel wool against it until it was shiny.

Note: Make sure the heat shrink wrap installation is rated for this application.