

DIY Farmhouse Cabinet

Addicted2DIY.com



***Before beginning this project, please read through all of the plans as well as the blog post associated with this project. Always use safety precautions whenever using power tools and follow the manufacturer's suggested guidelines. Make sure to wear proper safety protection (eye protection, hearing protection, etc.) before beginning any project. Cut all pieces per the measurements in the plans, unless noted otherwise.**

Materials:

- 1 sheet ¾" plywood (can use ½" sheet)
- 1 – 1x2 select pine board @ 8' long
- 1 – 1x4 select pine board @ 8' long
- 1 – 1x3 select pine board @ 8' long
- 5' 1 ¼" hardwood base shoe moulding
- 5' - ¾" cove moulding
- Veneer edge banding
- 12' 1x3 red oak (or wood of choice)
- 1/8" hardboard backing
- 1 ¼" **coarse thread** pocket screws
- 1 ¼" **fine thread** pocket screws (if using oak for cabinet doors)
- ¾" 18 ga. Brad nails
- 1 ¼" 18 ga. Brad nails
- ¾" narrow crown staples
- Wood filler
- 220 grit sandpaper
- ¼" wire mesh
- 4 – inset door hinges
- 2 – magnetic door stops
- 2 cabinet knobs or pulls
- 5mm shelf pins

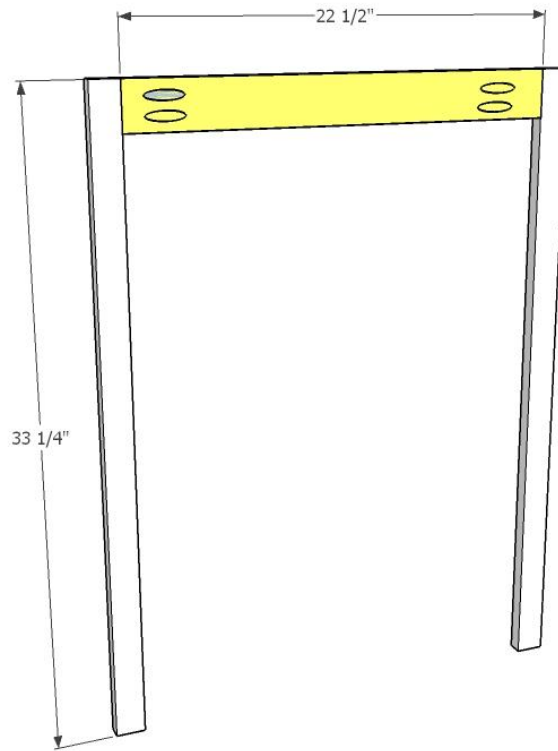
Tools:

- Miter saw
- Circular saw
- Kreg Jig
- Drill/Driver
- jigsaw
- 18 ga. Brad nailer
- Orbital sander
- Narrow crown stapler

Cut List: (measurements with a * are measured and cut to size)

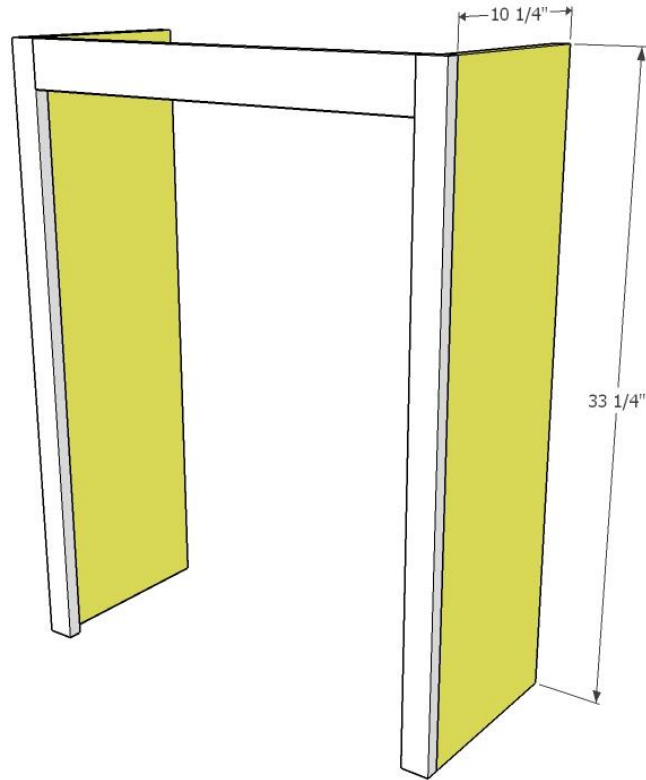
- 2 – 1x2 @ 33 ¼"
- 1 – 1x3 @ 22 ½"
- 2 – ¾" plywood @ 10 ¼" x 33 ¼"
- 2 – 1x4 @ 11 ¾" *
- 1 – 1x4 @ 27" *
- 2 – cove moulding for sides (measure and cut to size w/ 45 degree angle cut on one end and 90 degrees on other end)
- 1 – cove moulding for front (measure and cut to size w/ two 45 degree angles)
- 1 – ¾" plywood 11" x 24" (¾" square notches in front two corners)
- 2 – moulding for top sides (measure and cut to size w/ 45 degree angle cut on one end and 90 degrees on other end)
- 1 – moulding for top front (measure and cut to size w/ 45 degree angles on each end)
- 1 – ¾" plywood @ 12" x 27 ½"
- 1 – ¾" plywood @ 23 ¾" x 10 1/8"
- 1 – hardboard backing – 25" x 30 1/8"
- 2 – ¼" wire mesh @ 24" x 8"

STEP 1:



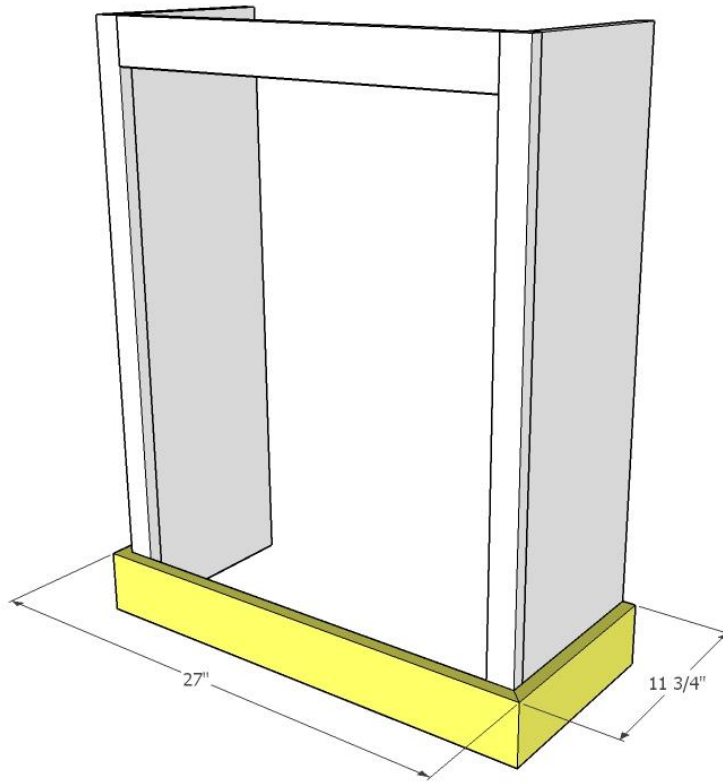
Drill $\frac{3}{4}$ " pocket holes into each end of the 1x4 piece. Glue and clamp the 1x2 pieces to each side, flush at the top. Attach with $1\frac{1}{4}$ " pocket screws.

STEP 2:



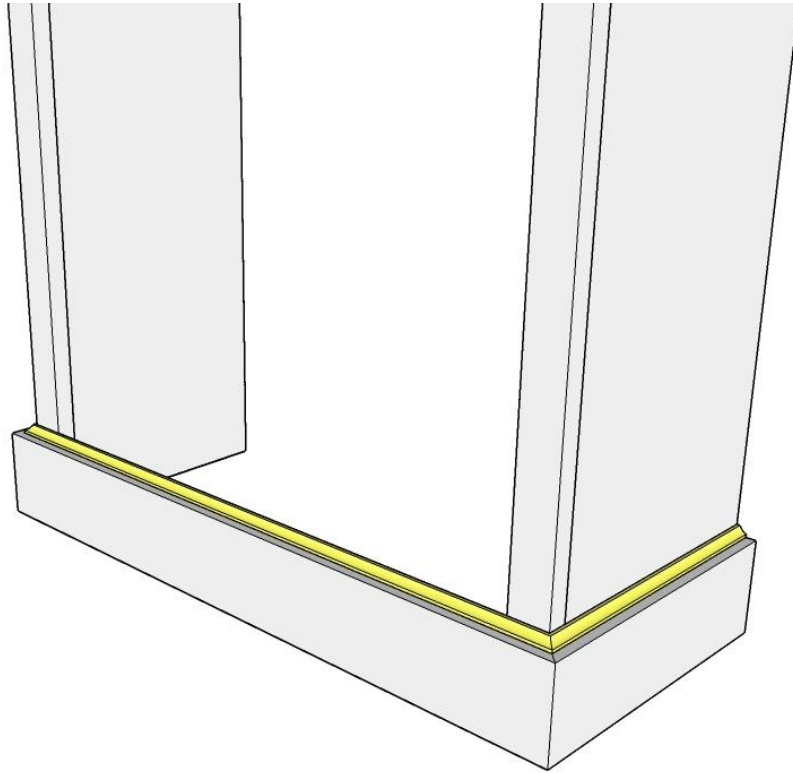
Drill $\frac{3}{4}$ " pocket holes into top ends of cabinet sides. Line up the $\frac{3}{4}$ " plywood sides flush with the outside edge of the 1x2 face frame. Glue and clamp into place. Attach with $1 \frac{1}{4}$ " brad nails.

STEP 3:



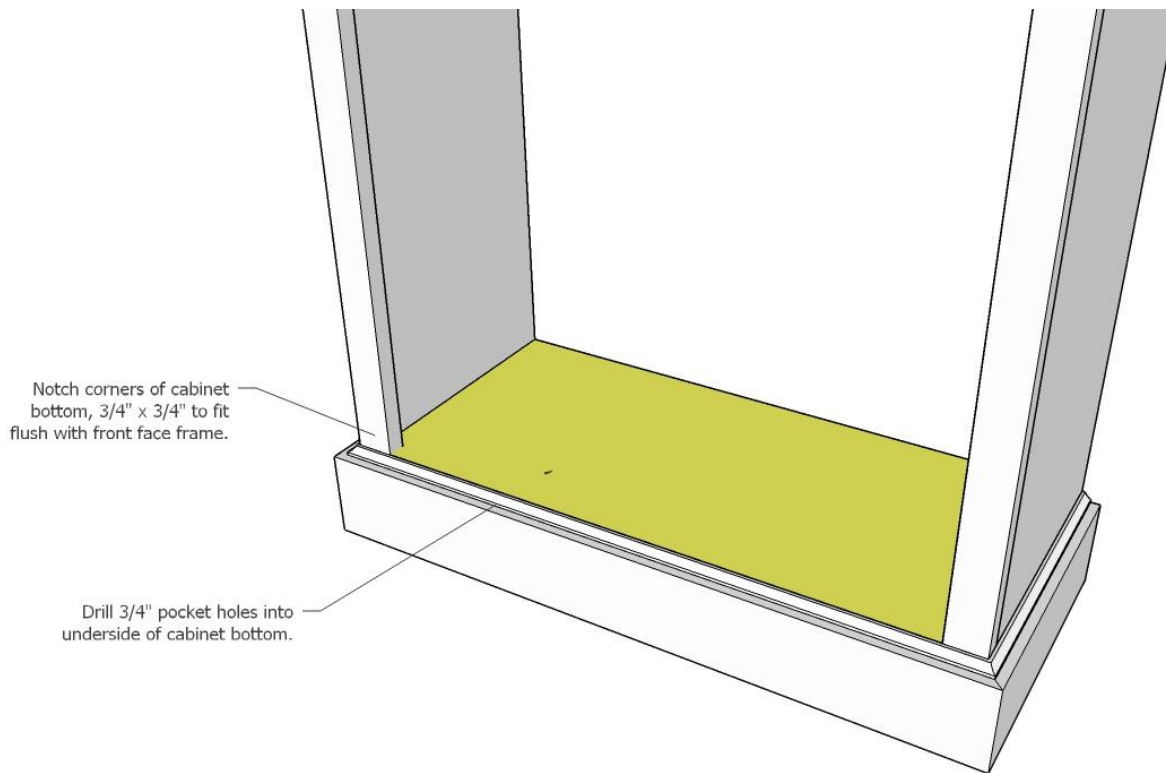
Measure and cut to size 1x4 pine boards for bottom moulding w/ 45 degree angle on one end for sides and 45 degree angles on each end for front.. Attach with wood glue and 1 1/4" brad nails.

STEP 4:



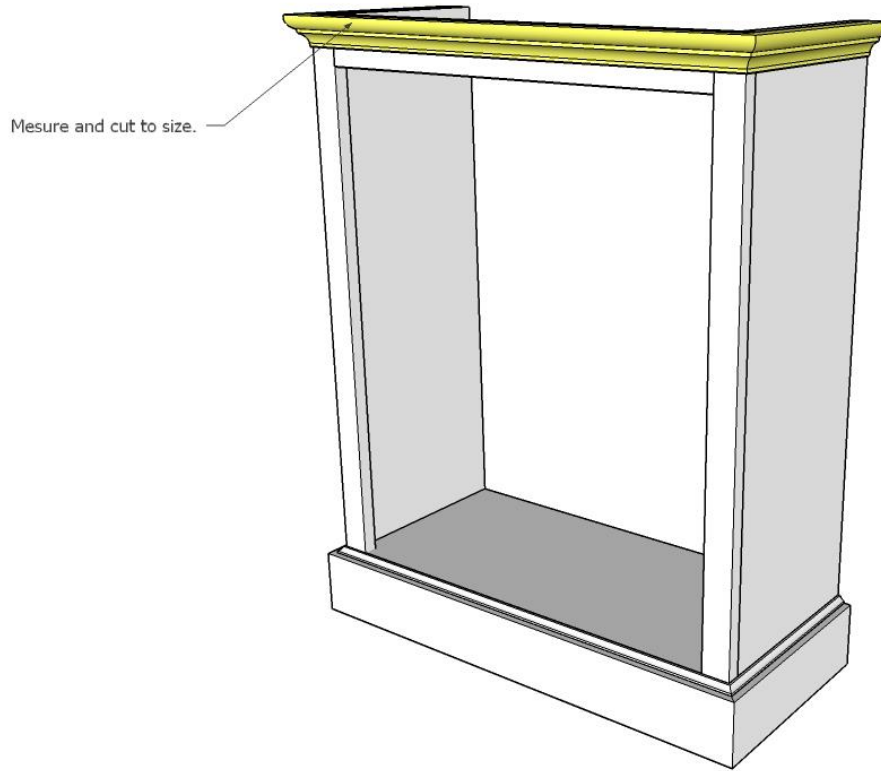
Measure and cut to size cove moulding with 45 degree angle on one end for sides and 45 degree angles on each end for front. Attach with wood glue and $\frac{3}{4}$ " brad nails.

STEP 5:



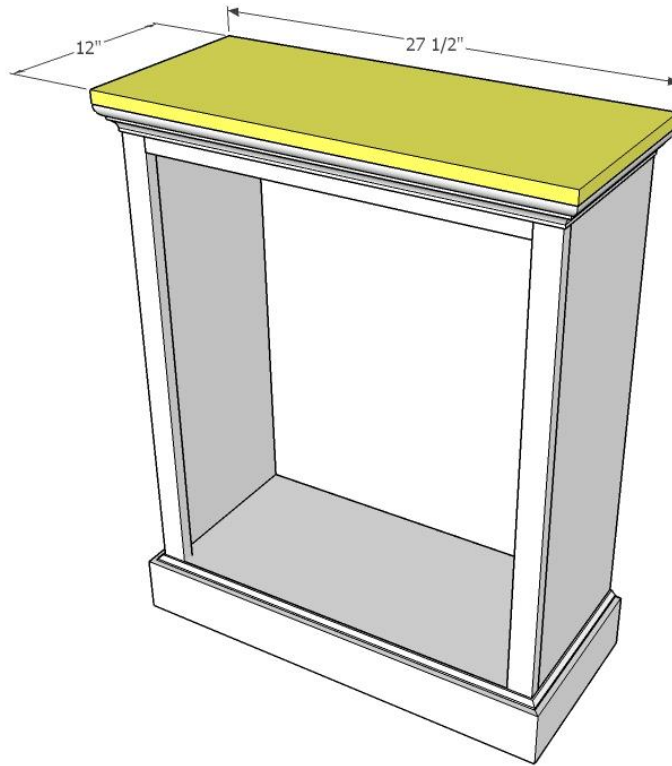
Notch the front of the cabinet bottom with $\frac{3}{4}$ " notches to fit around face frame. Drill $\frac{3}{4}$ " pocket holes into the underside. Flip cabinet onto back and set bottom flush with the top of the cove moulding. Attach with 1 $\frac{1}{4}$ " pocket screws.

STEP 6:



Measure and cut to size the top moulding with 45 degree angles on one end of sides and 45 degree angles on each end of front piece. Attach with wood glue and 1 ¼" brad nails, flush with the top of the cabinet.

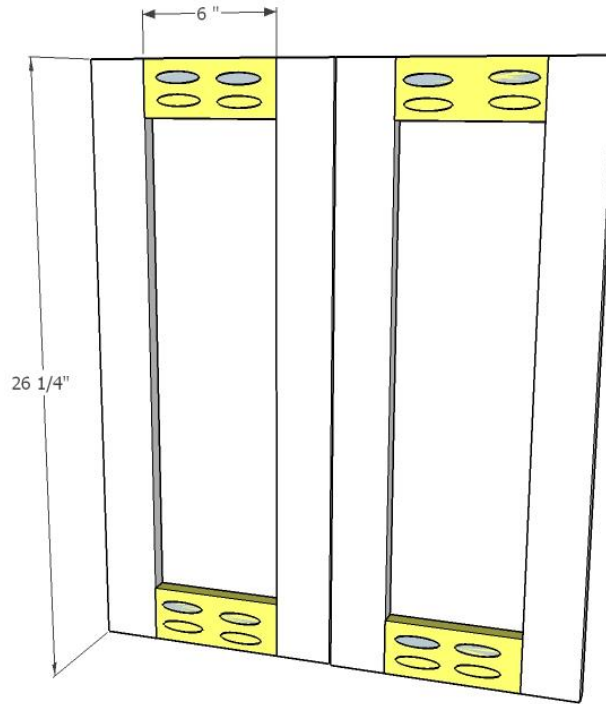
STEP 7:



Glue veneer edge banding to sides and front of cabinet top. Attach cabinet top with approx $\frac{1}{4}$ " overhang on sides and front, with wood glue and $1 \frac{1}{4}$ " pocket screws.

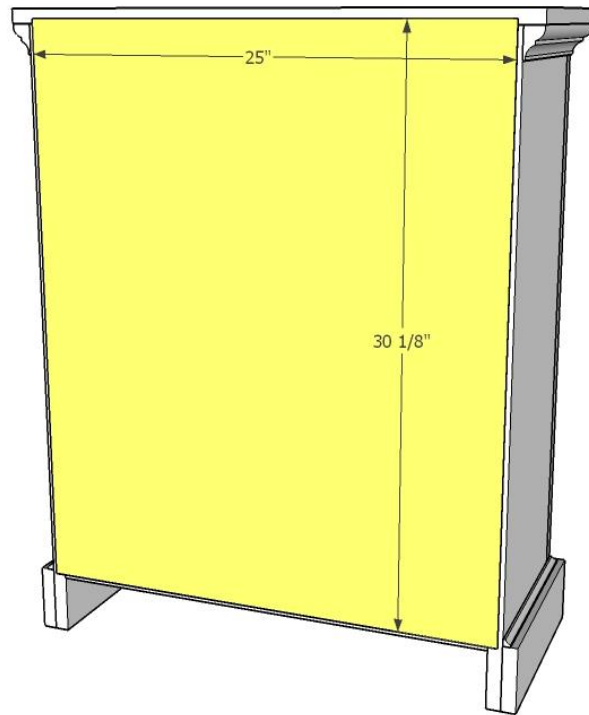
Drill shelf pin holes in inside faces of cabinet sides towards the front and back to support shelf.

STEP 8:



Cut oak cabinet face frames to size. Drill $\frac{3}{4}$ " pocket holes into 6" cabinet rails. Build cabinet doors with wood glue and $1\frac{1}{4}$ " fine thread pocket screws. Finish as desired with paint or stain.

STEP 9:



Cut hardboard backing to size and attach with $\frac{3}{4}$ " narrow crown staples.

Sand entire cabinet with 220 grit sandpaper. Finish as desired. Attach doors to cabinet box with inset hinges, leaving $\frac{1}{8}$ " spacing around all sides of cabinet doors. Attach magnetic door stops so cabinet doors close flush with the face frame of the cabinet.

Cut and attach wire mesh to inside of doors with $\frac{3}{4}$ " narrow crown staples. Install cabinet door knobs or pulls.

